

**Electrical installation instructions**

**Sähköohjeet**

**El-vejledning**

**Elektroanleitung**

**Pokyny pro elektrickou instalaci**

**Instrukcja instalacji elektrycznej**

**Elektrische installatie instructie**

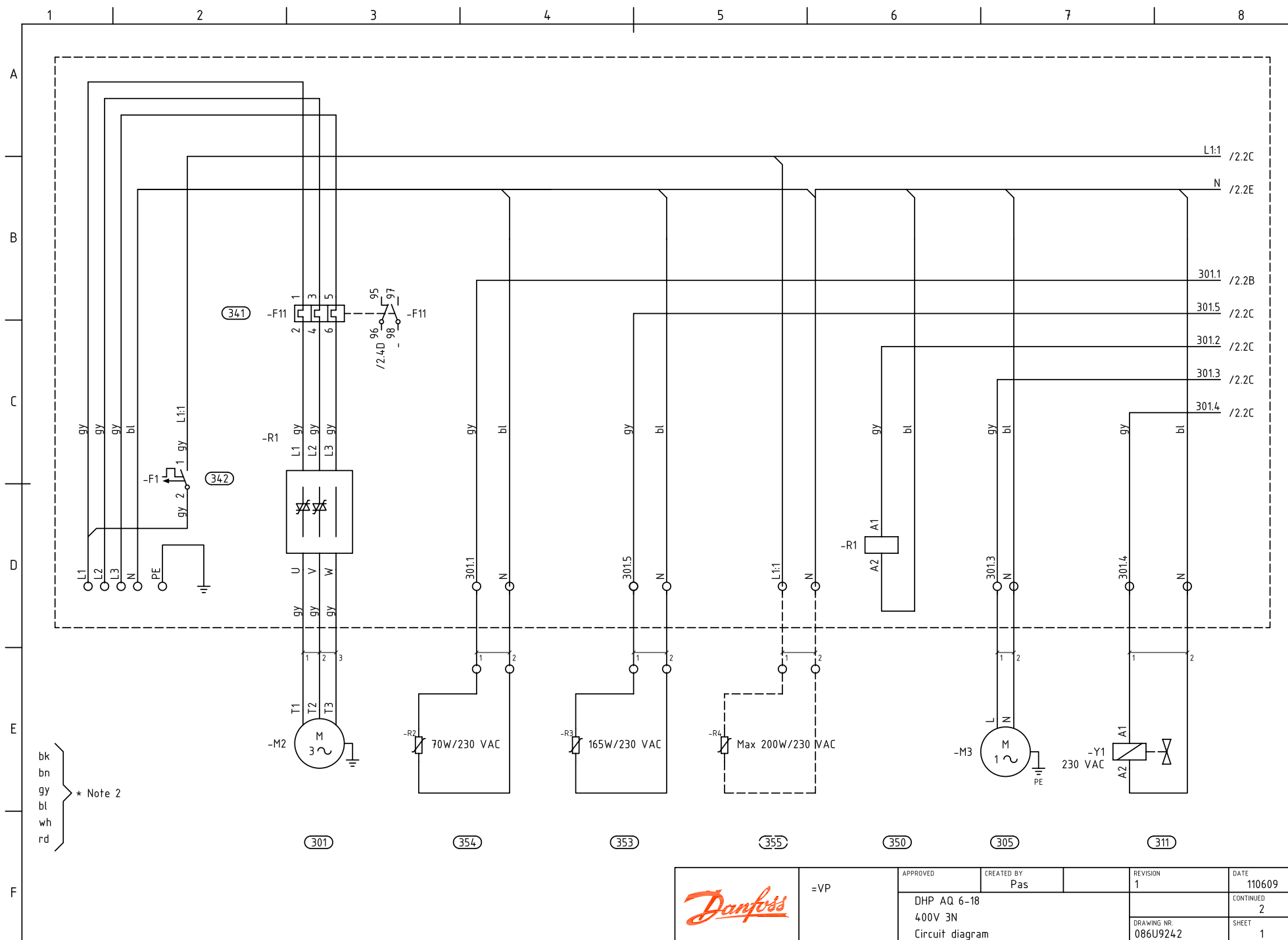
**Installation électrique**

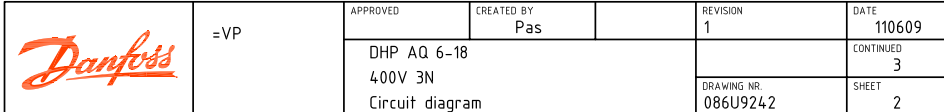
**Elanvisning**

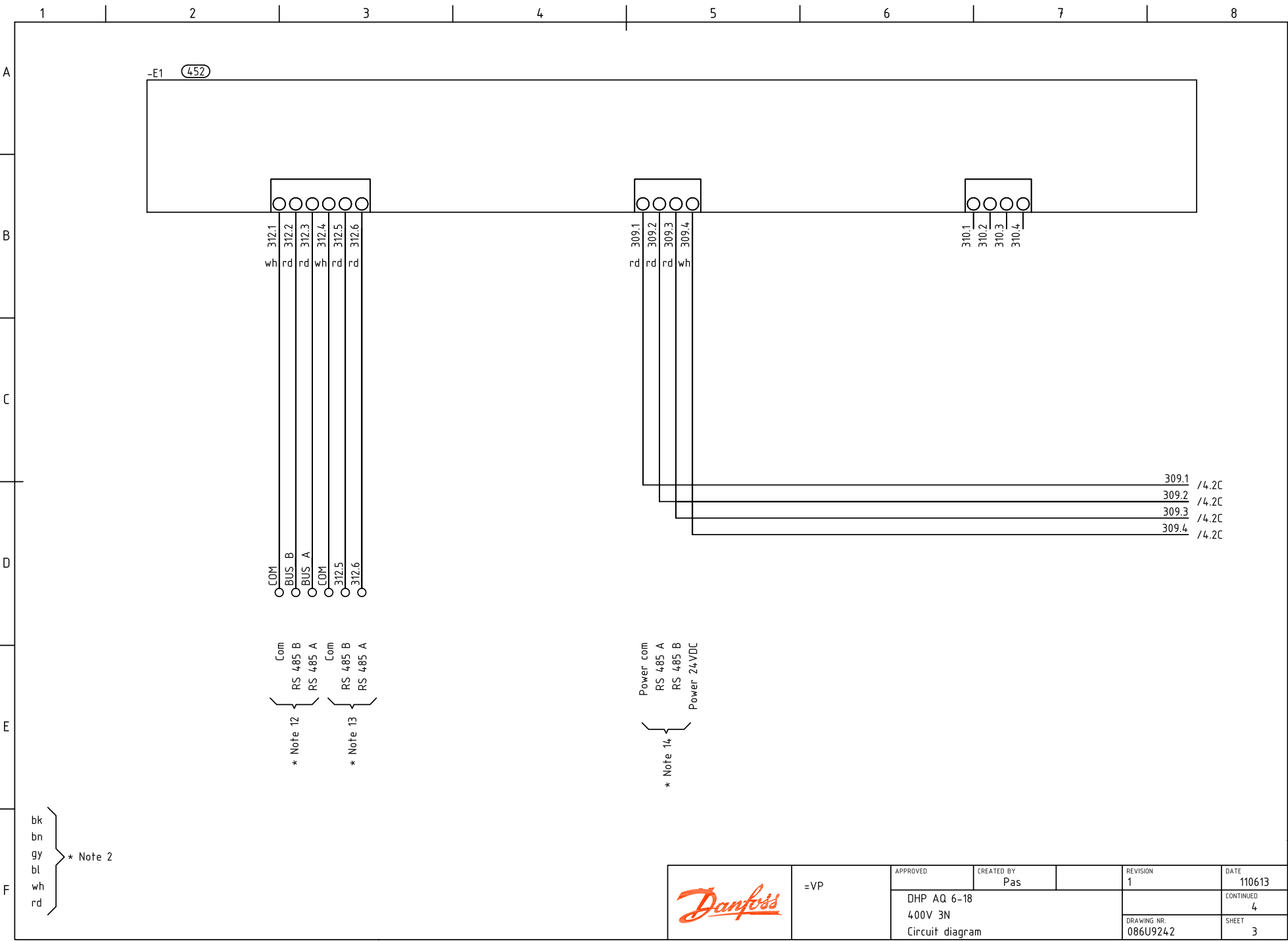
**DHP-AQ**

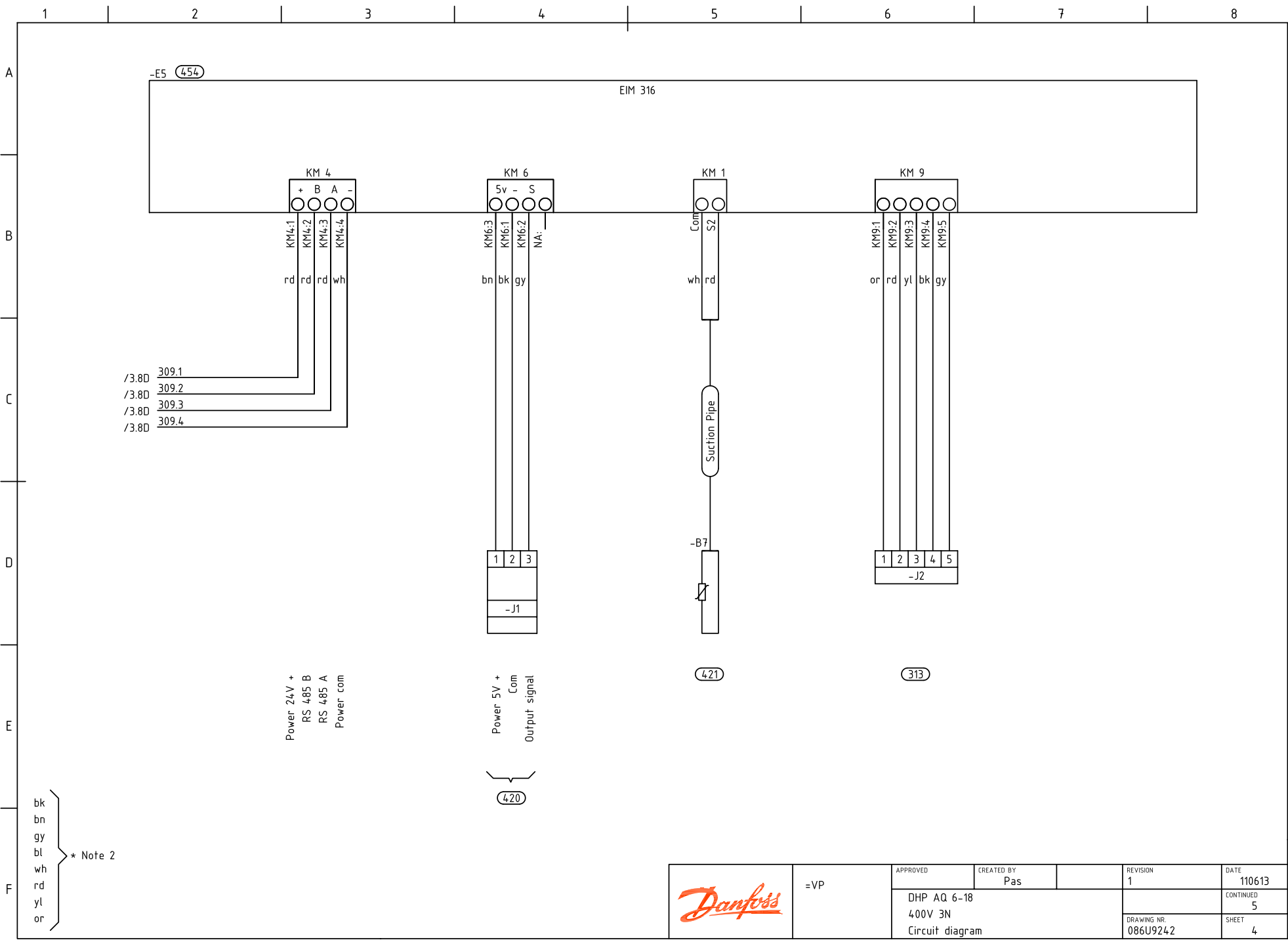


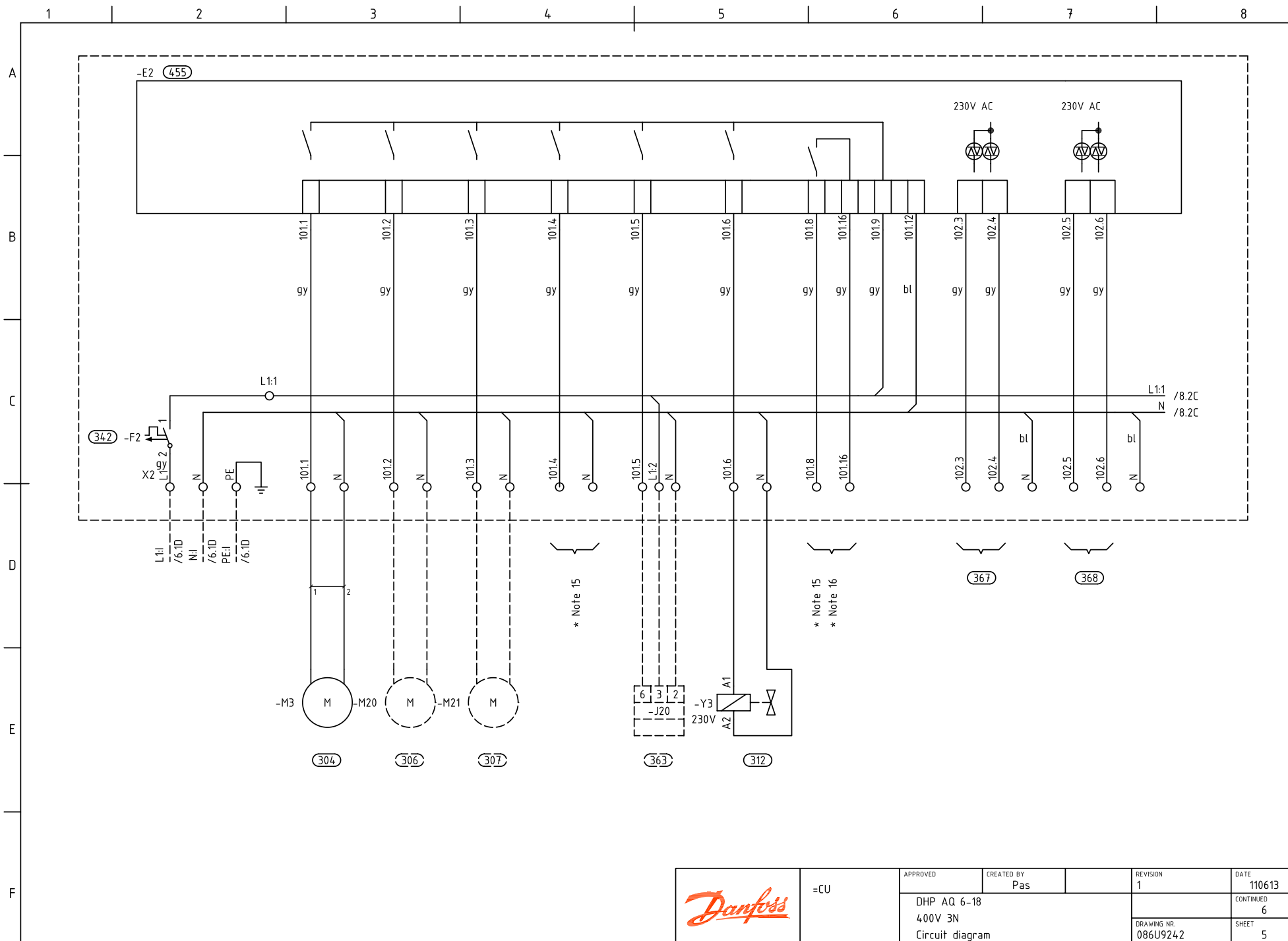
DHP-AQ 6 – 18kW 400V 3N.....	3
DHP-AQ 6 – 16kW 230V 1N.....	16




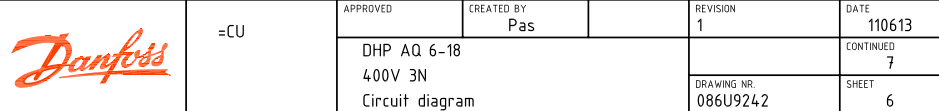






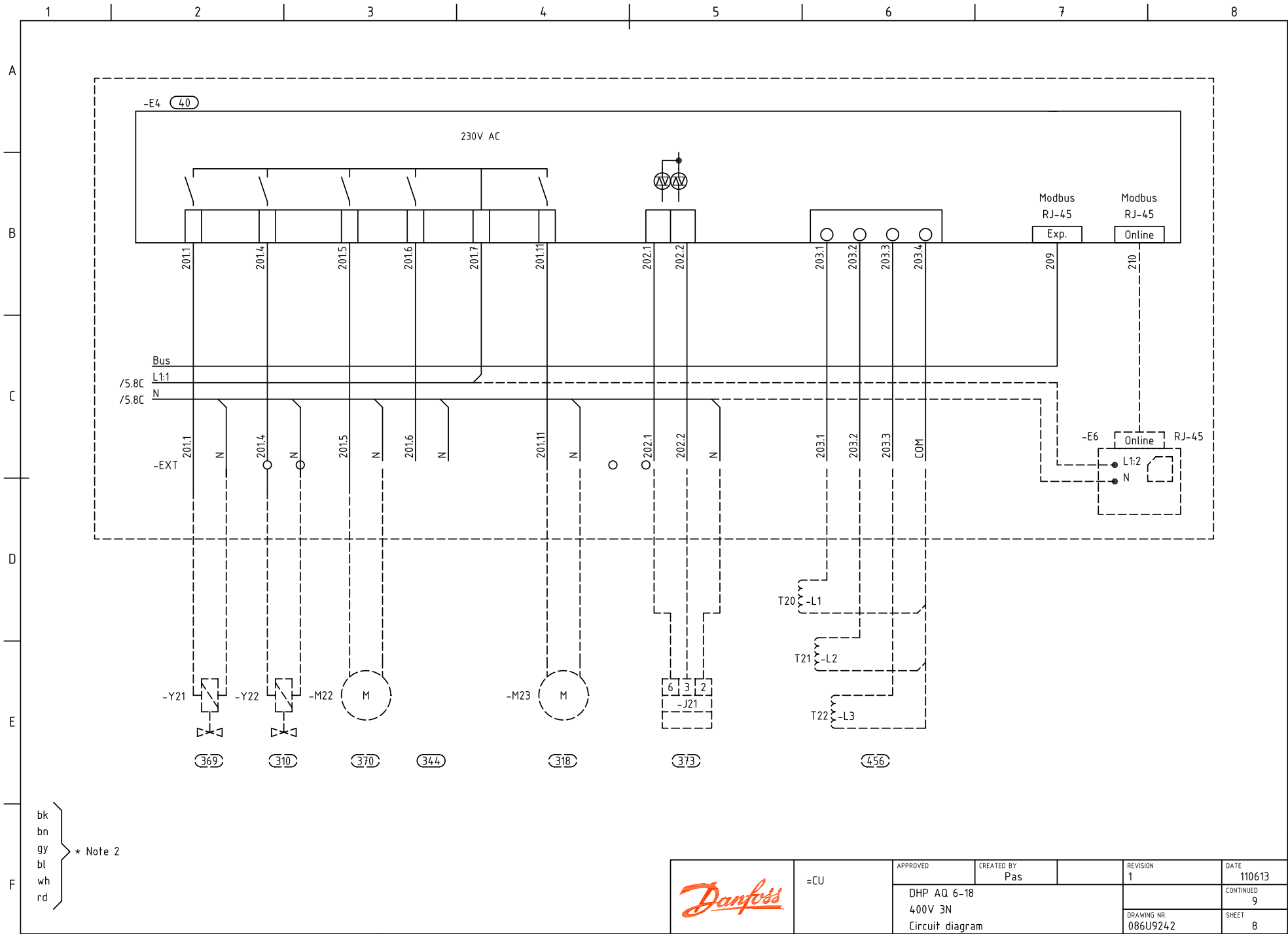


	=CU	APPROVED	CREATED BY Pas	REVISION 1	DATE 110613
		DHP AQ 6-18 400V 3N Circuit diagram			CONTINUED 6
					DRAWING NR. 086U9242 SHEET 5

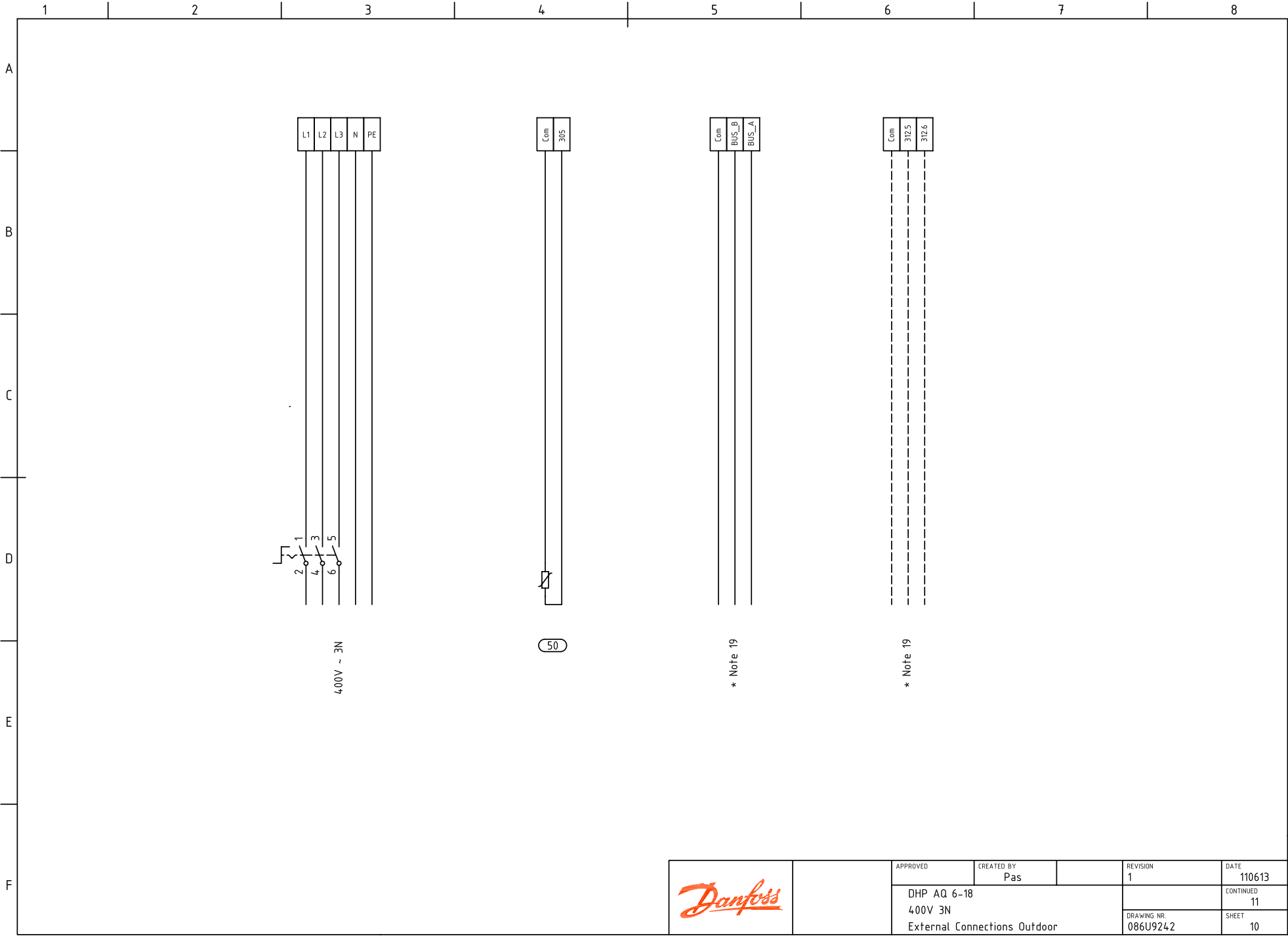


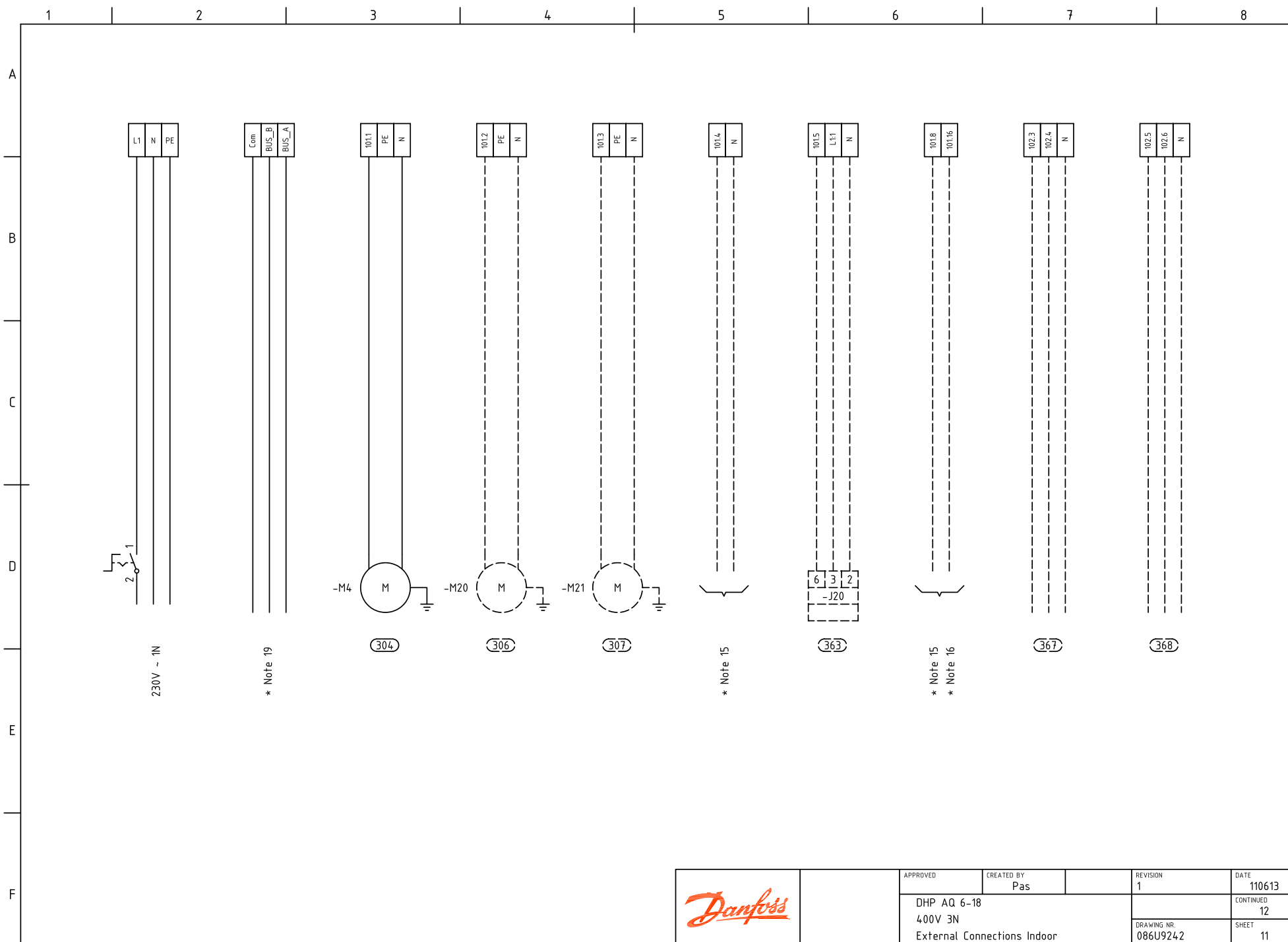


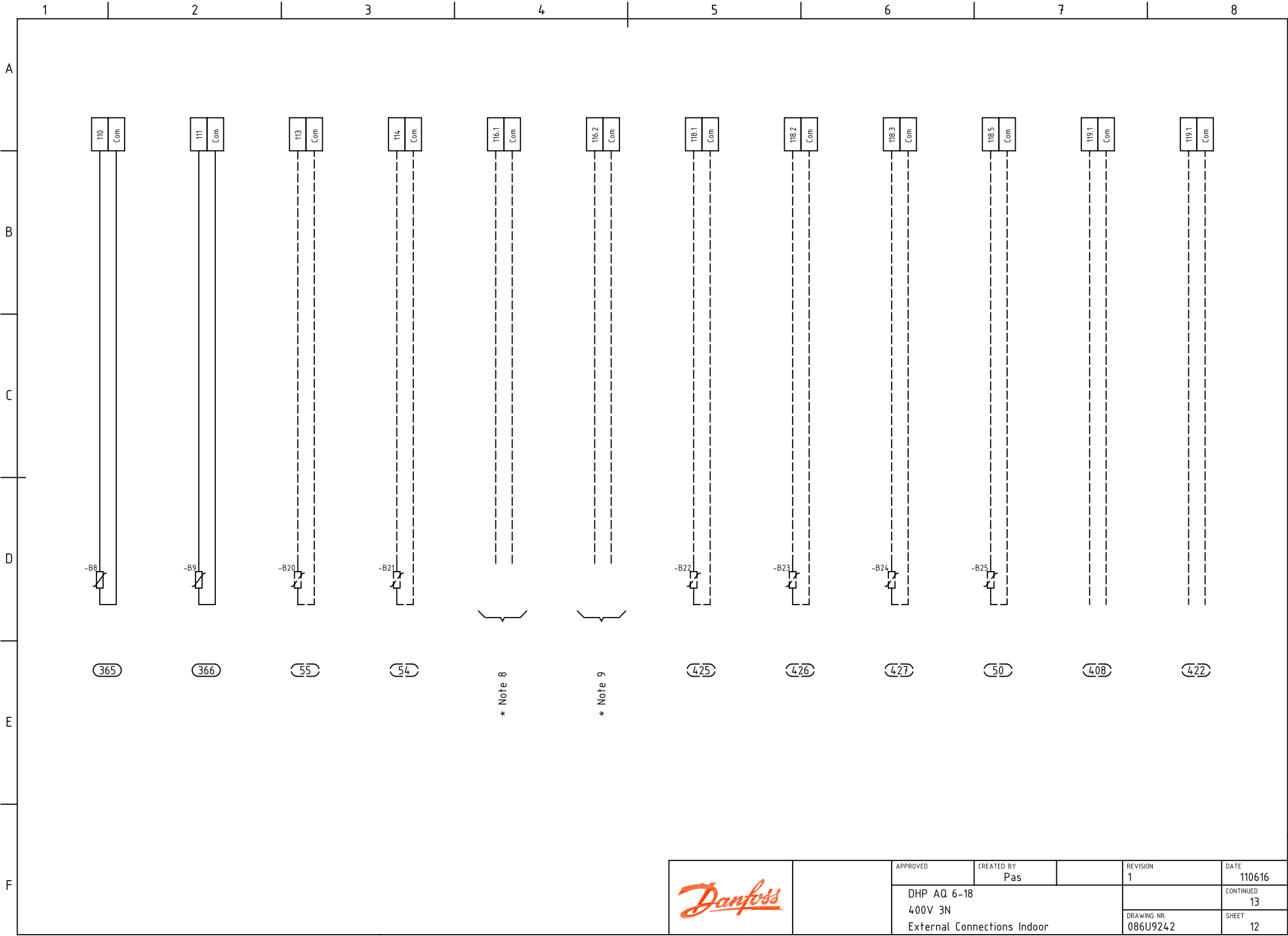


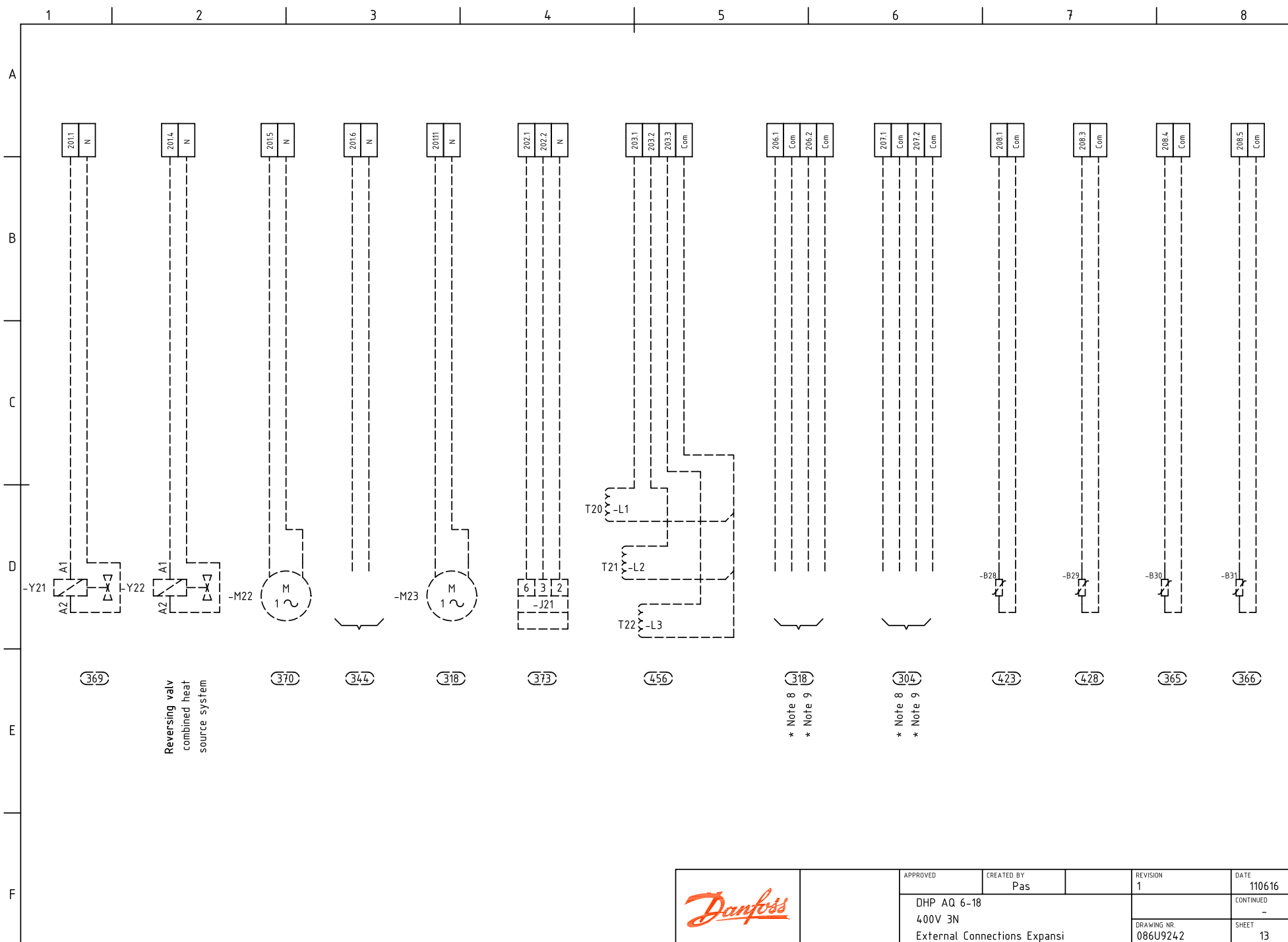




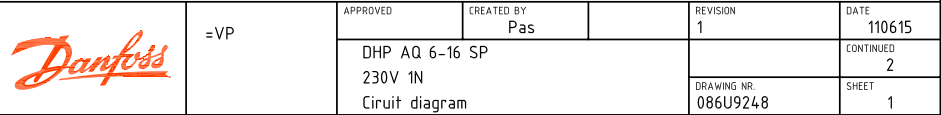




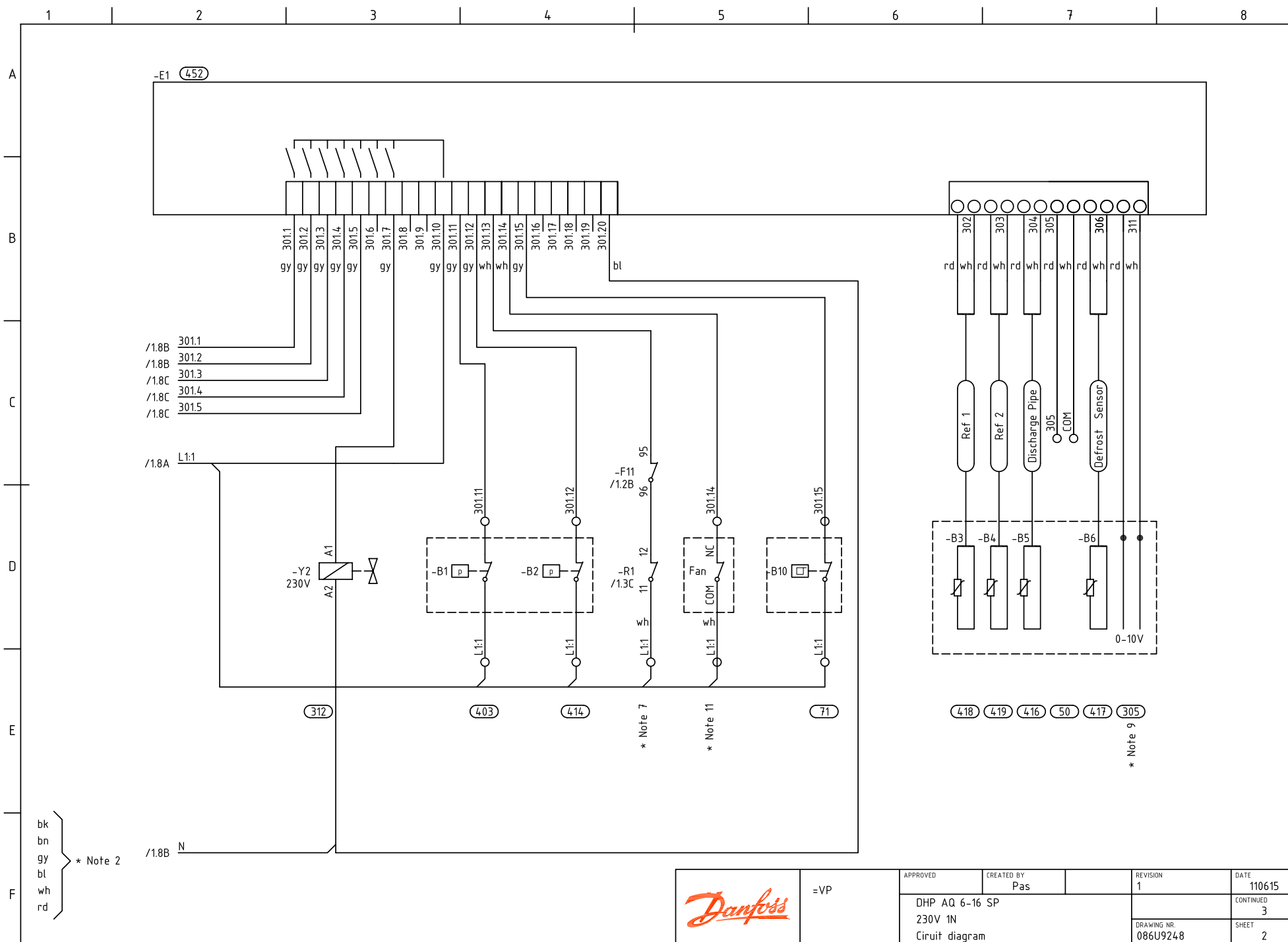





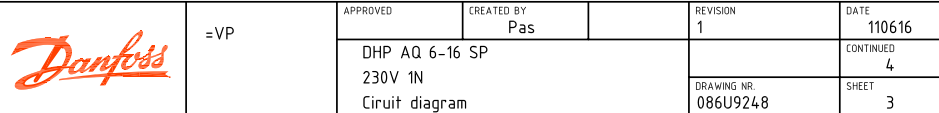
		APPROVED	CREATED BY Pas	REVISION 1	DATE 110616
		DHP AQ 6-18 400V 3N External Connections Expansi			CONTINUED -
					DRAWING NR. 086U9242 SHEET 13

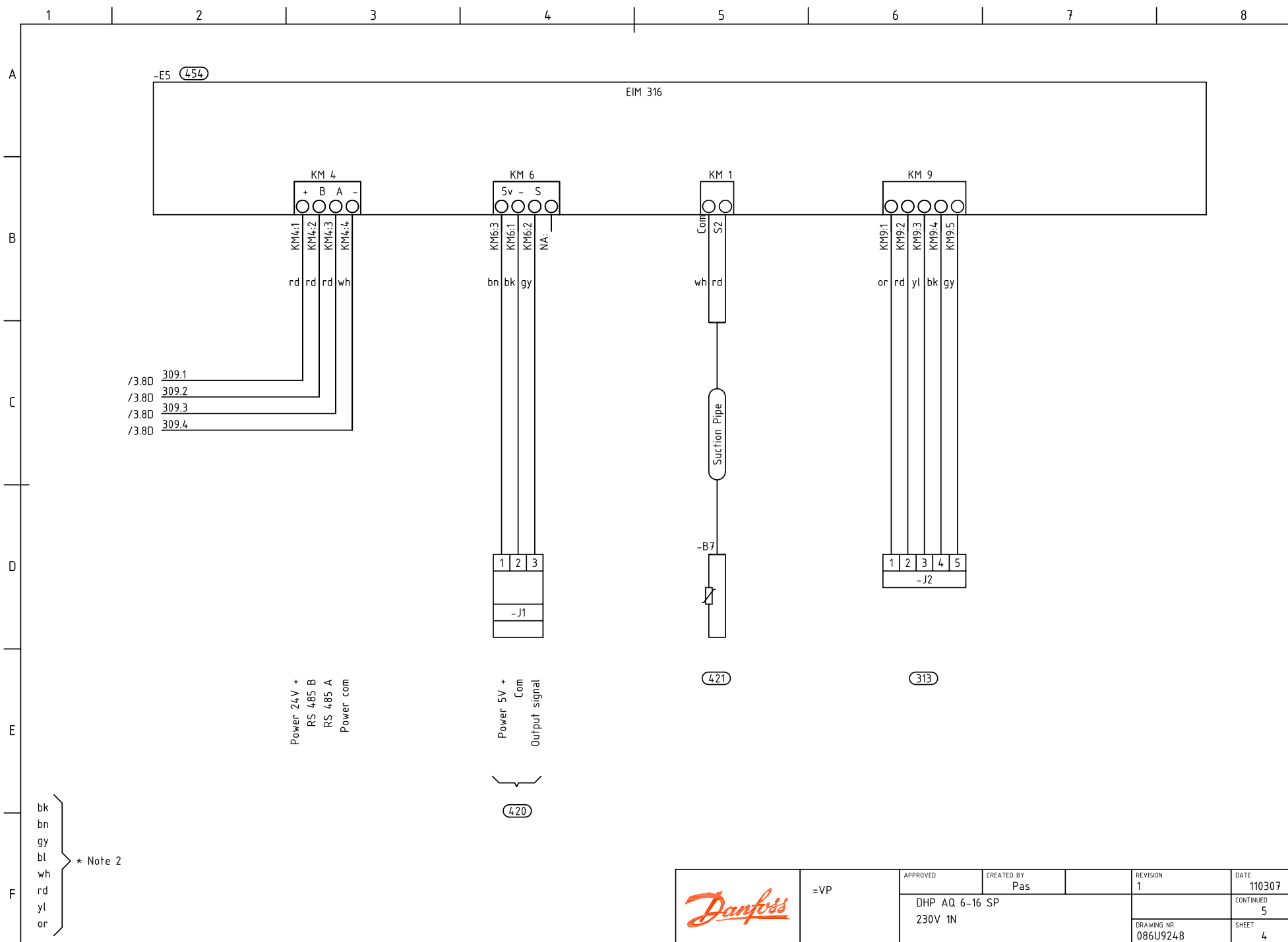





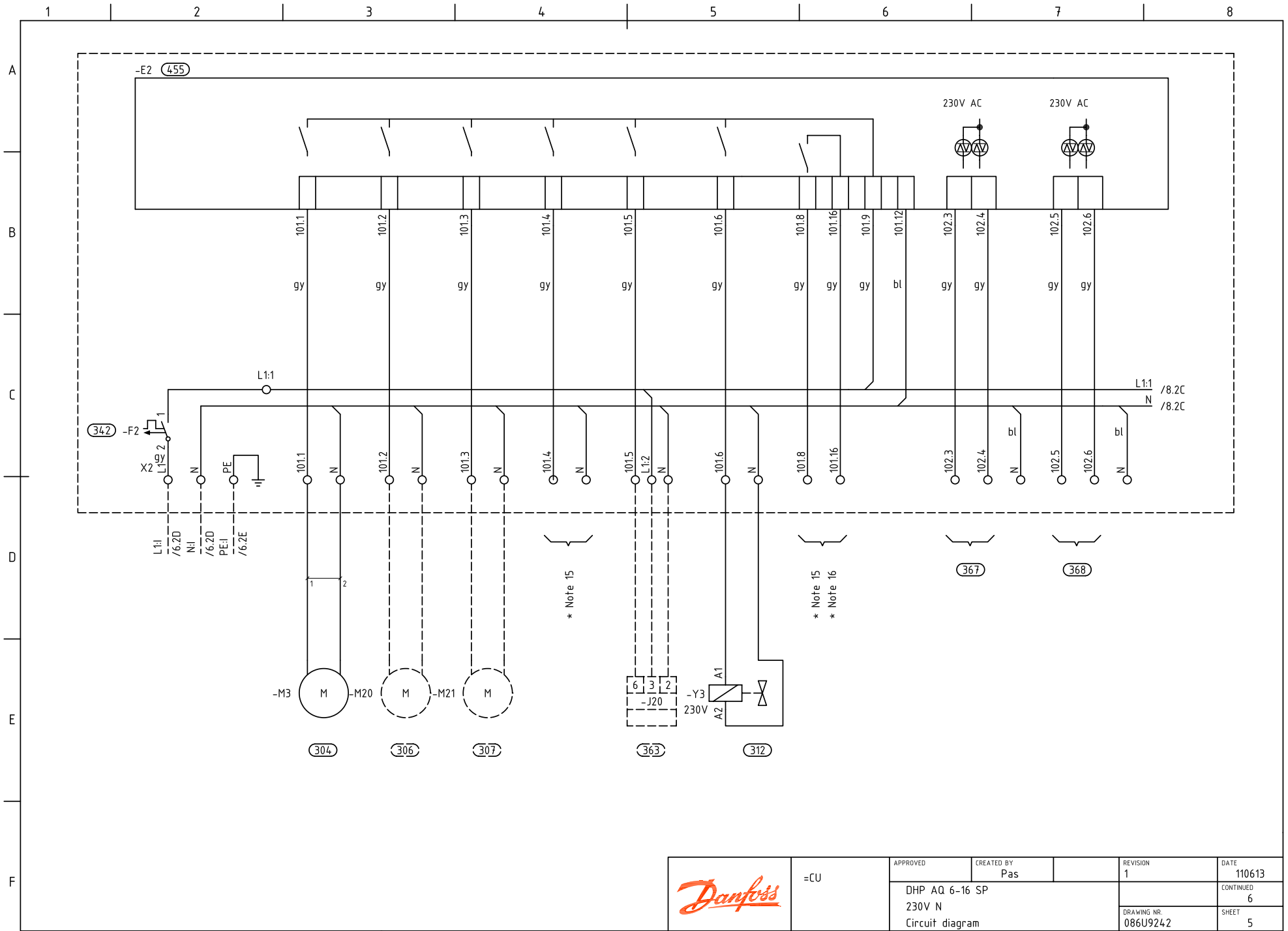



	=VP		APPROVED	CREATED BY Pas	REVISION 1	DATE 110615
	DHP AQ 6-16 SP		230V 1N		CONTINUED 3	
	Circuit diagram		DRAWING NR. 086U9248		SHEET 2	

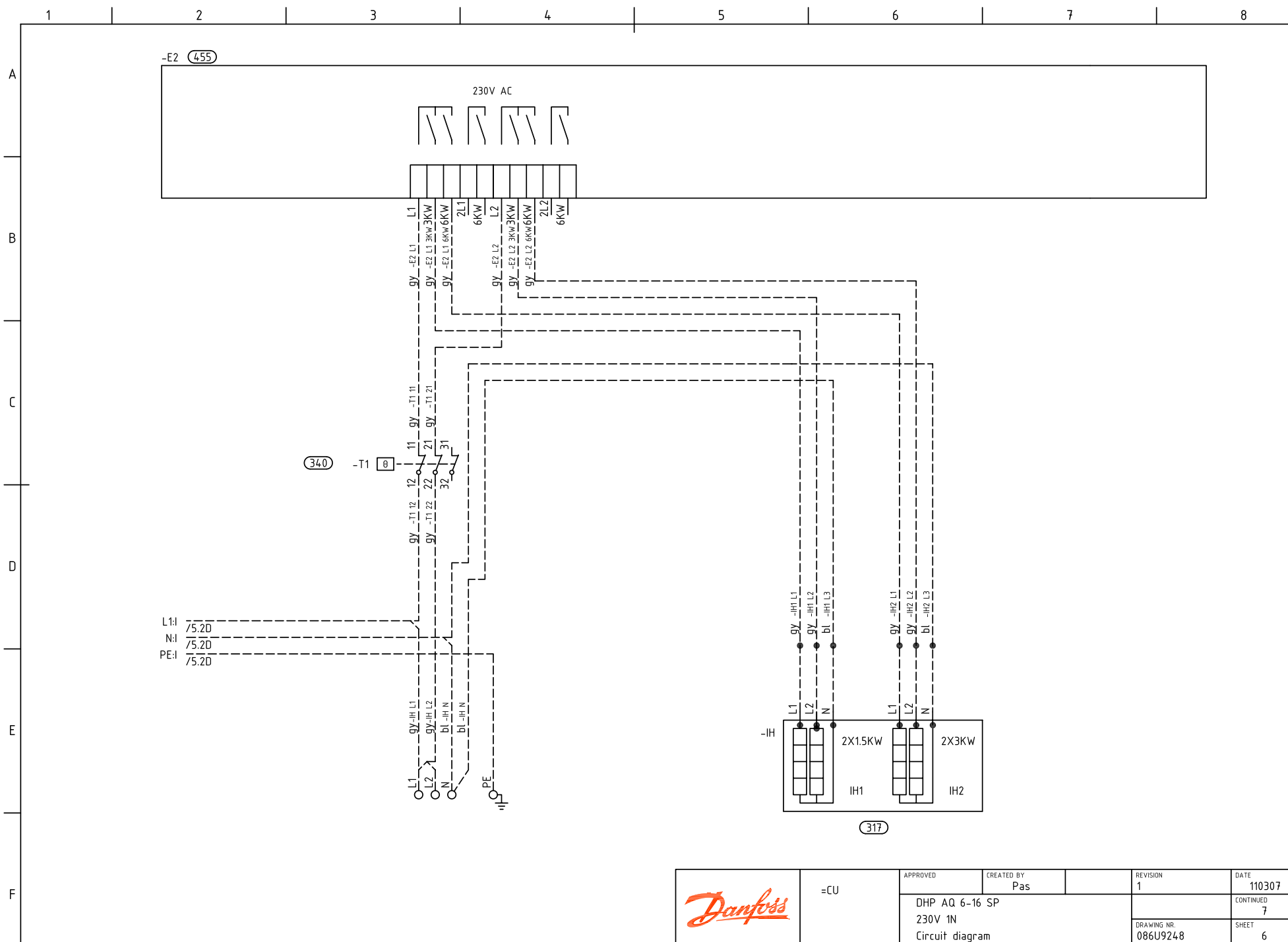


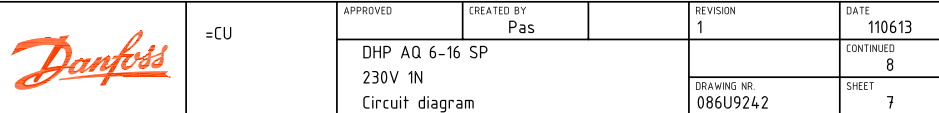


	=VP	APPROVED	CREATED BY Pas	REVISION 1	DATE 110307
		DHP AQ 6-16 SP 230V 1N			CONTINUED 5
		DRAWING NR. 086U9248			SHEET 4

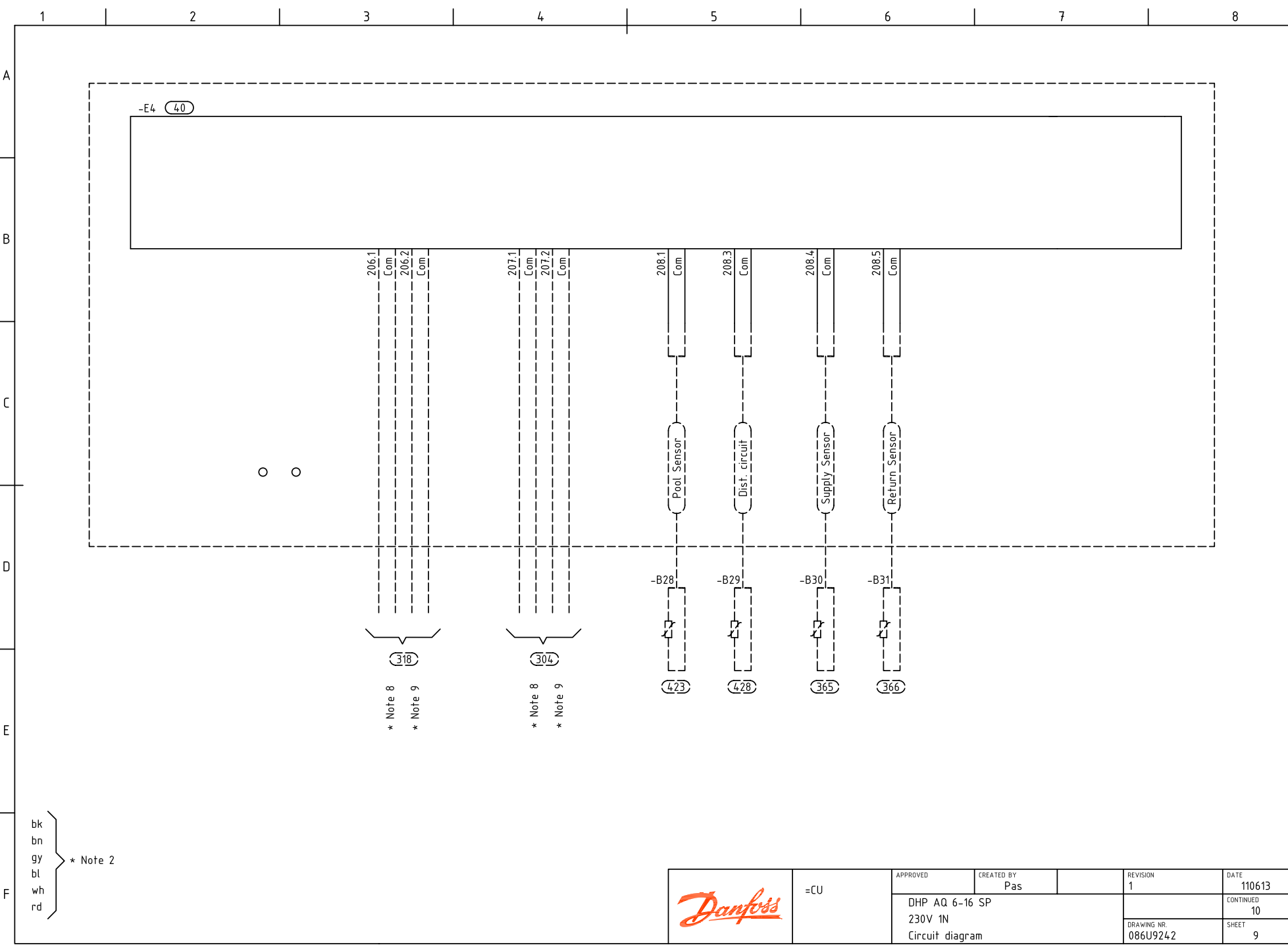


	=CU	APPROVED	CREATED BY Pas	REVISION 1	DATE 110613
		DHP AQ 6-16 SP 230V N Circuit diagram			CONTINUED 6
					DRAWING NR. 086U9242 SHEET 5

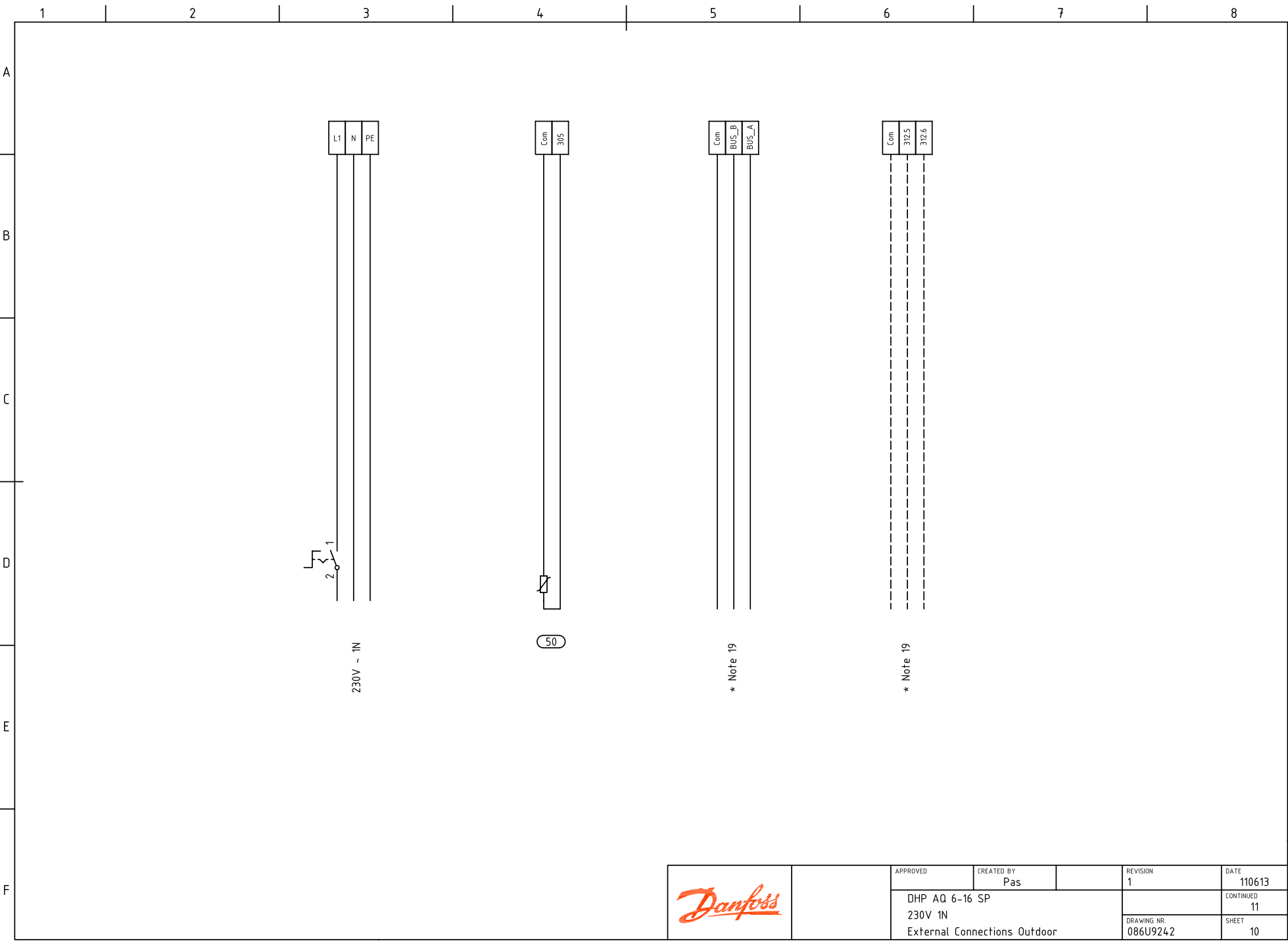





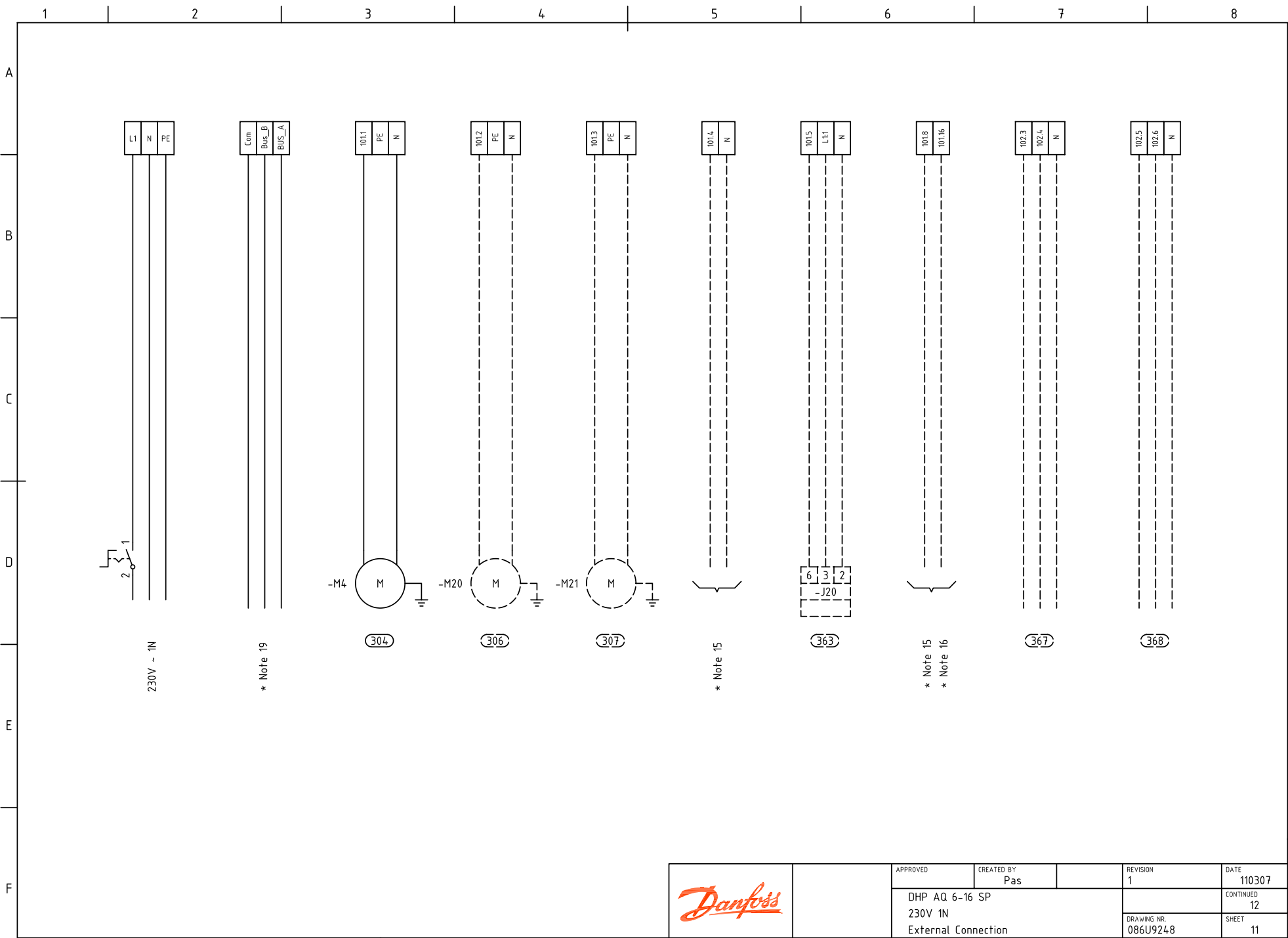


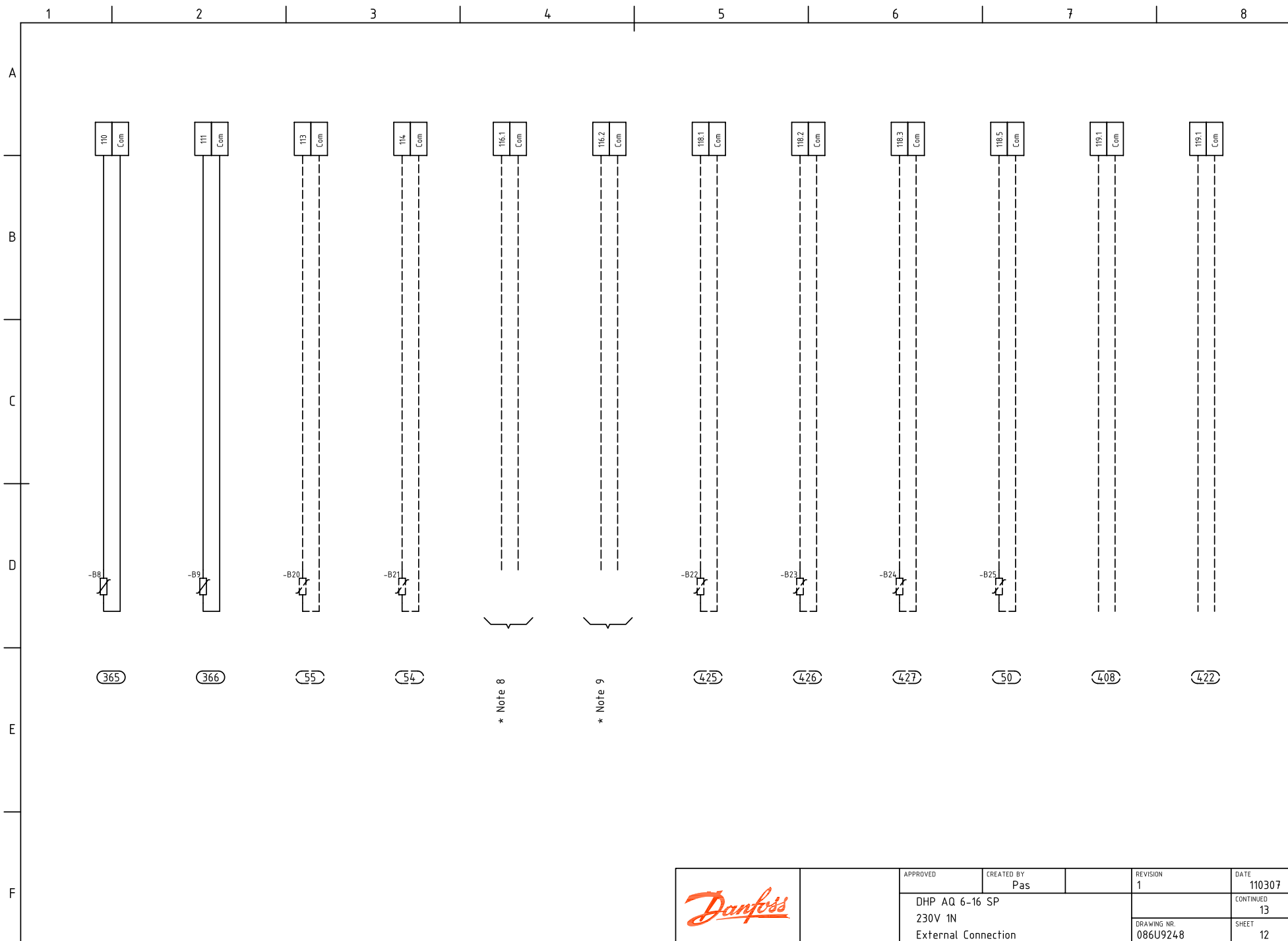


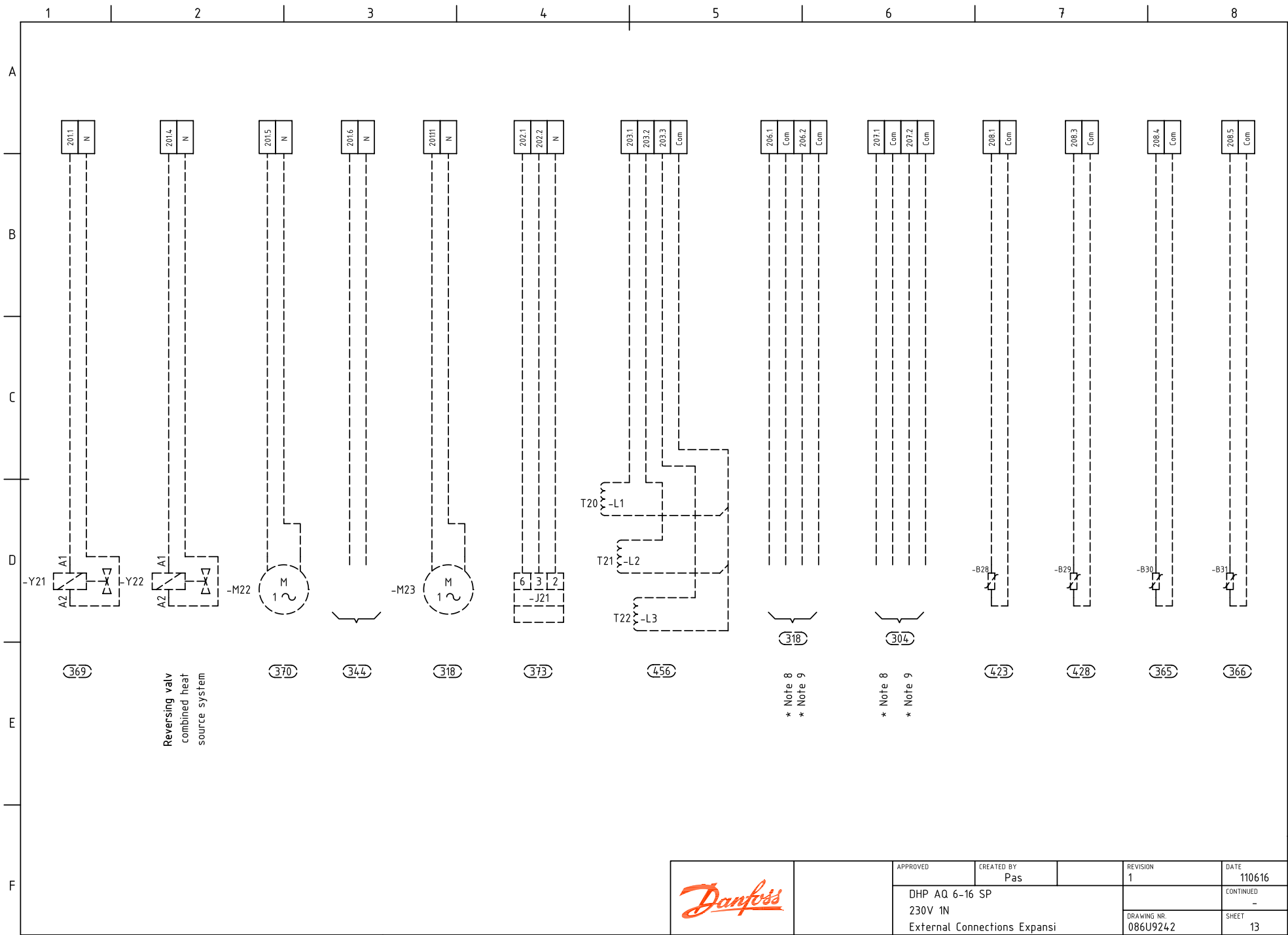




		APPROVED	CREATED BY Pas	REVISION 1	DATE 110613
		DHP AQ 6-16 SP			CONTINUED 11
		230V 1N External Connections Outdoor			DRAWING NR 086U9242 SHEET 10









Danfoss A/S  
[www.heatpumps.danfoss.com](http://www.heatpumps.danfoss.com)