



Wiring Diagram

DHP-H Varius Pro+

Danfoss A/S is not liable or bound by warranty if these instructions are not adhered to during installation or service.

The English language is used for the original instructions.
Other languages are a translation of the original instructions.
(Directive 2006/42/EC)

© Copyright Danfoss A/S

Table of Contents

1	Table item number	4
2	DHP-H Varius Pro+ /	5

Wiring Diagram

DHP-H Varius Pro+

1 Table item number

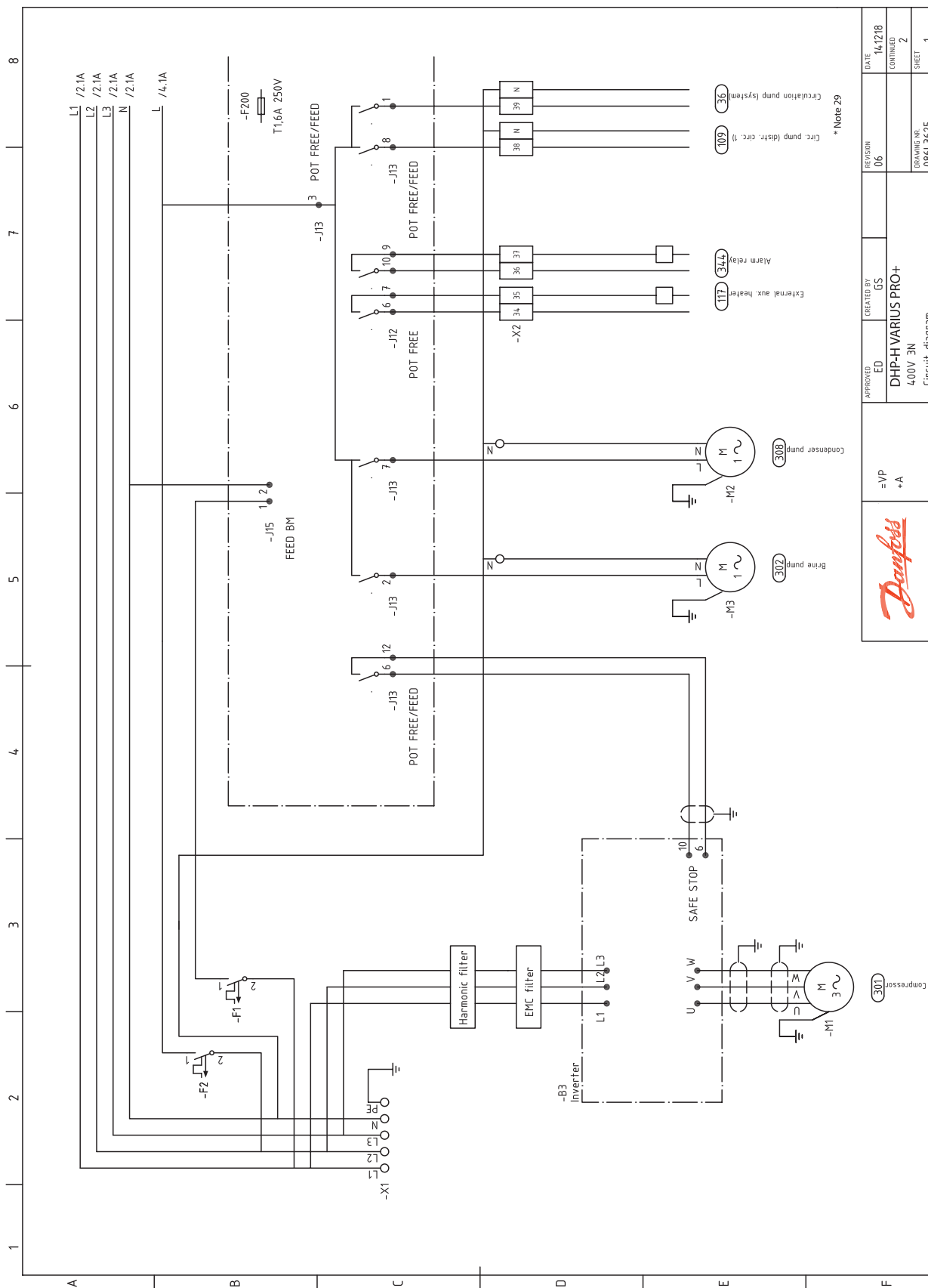
Number/Note	Description
33	Circulation pump (shunt auxiliary heater)
34	Circulation pump (hot gas)
36	Circulation pump (system)
50	Outdoor sensor
51	System supply line sensor
53	Hot water sensor lower
55	Hot water sensor top
71	Flow guard
72	External auxiliary heater shunt
77	Reversing valve hot water
107	Shunt (distribution circuit 1)
108	Supply line sensor (distribution circuit 1)
109	Circulation pump (distribution circuit 1)
117	External auxiliary heater
136	Buffer tank sensor
170	System circ. pump A
171	System circ. pump B
172	Auxiliary circ. pump (brine)
173	BMS/Building management system
174	Accessory
301	Compressor
302	Brine pump
308	Condenser pump
313	Electronic expansion valve
317	Immersion heater
319	Solenoid
340	Temperature guard
344	Alarm relay

Number/Note	Description
364	Shunt valve hot-water
405	Radiator out sensor
407	HGW sensor
408	EVU
411	Radiator return sensor
412	Brine out sensor
413	Brine in sensor
414	High pressure switch
416	Discharge pipe sensor
421	Suction gas sensor
431	Liquid line sensor
432	Signal compressor in operation
433	Low pressure transmitter
434	High pressure transmitter
435	Inverter
436	DI 1
437	DI 2
438	DI 3
439	DI 4
440	Spare
453	Display
456	Current Limiter
* Note 28	230VAC for external loads
* Note 29	Max 5A load in total on terminal 38, 39, 50, 52 (50-53 in some models)
* Note 30	24VAC for external loads
* Note 31	Max 1A load in total on terminal 54 - 59 (AC1, AC2 in some models)

Wiring Diagram

DHP-H Varius Pro+

2 DHP-H Varius Pro+ /



DATE	14.12.18
REVISION	06
CONTINUED	2
DRAWING NR.	0861.36.25
SHEET	1



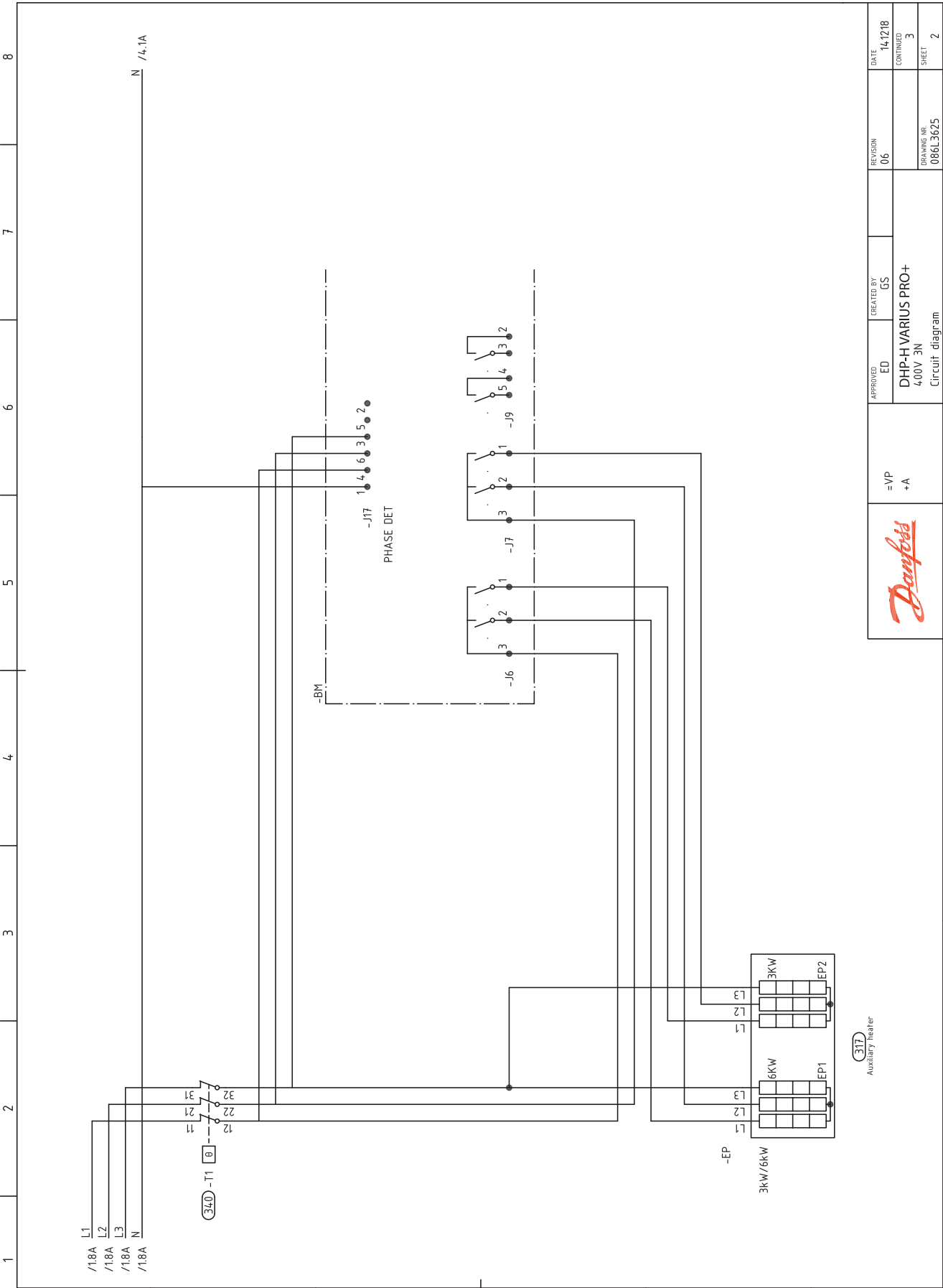
APPROVED
ED
DHP-H VARIUS PRO+
400V 3N
Circuit diagram

=VP
+A

* Note 29
Circ. pump (system)
Circ. pump (distr. circ. 1)

Wiring Diagram

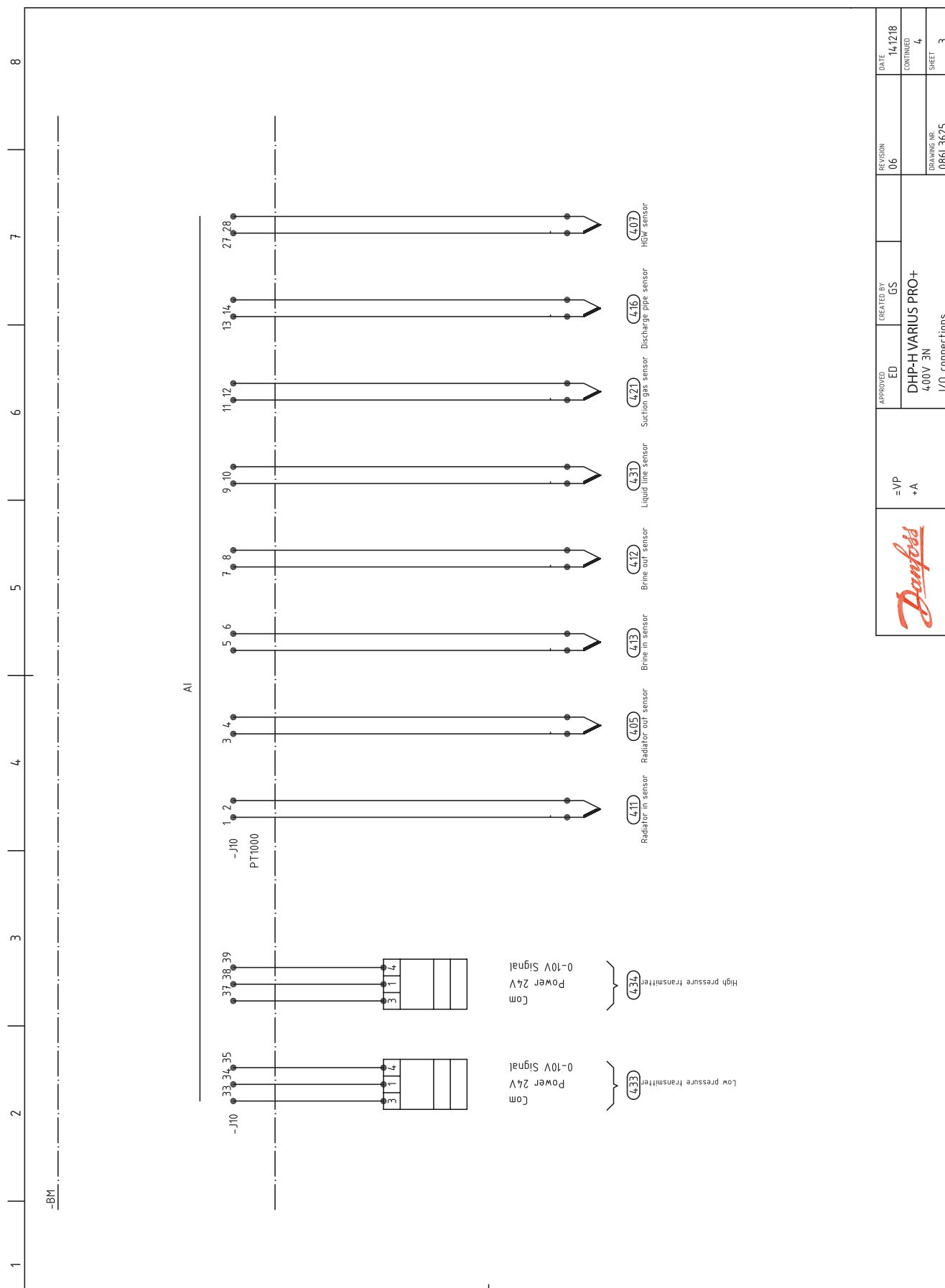
DHP-H Varius Pro+



APPROVED	ED	CREATED BY	GS	DATE	14.12.18
DHP-H VARIUS PRO+				CONTINUED	3
400V 3N				DRAWING NR.	08613625
Circuit diagram				SHEET	2

Wiring Diagram

DHP-H Varius Pro+

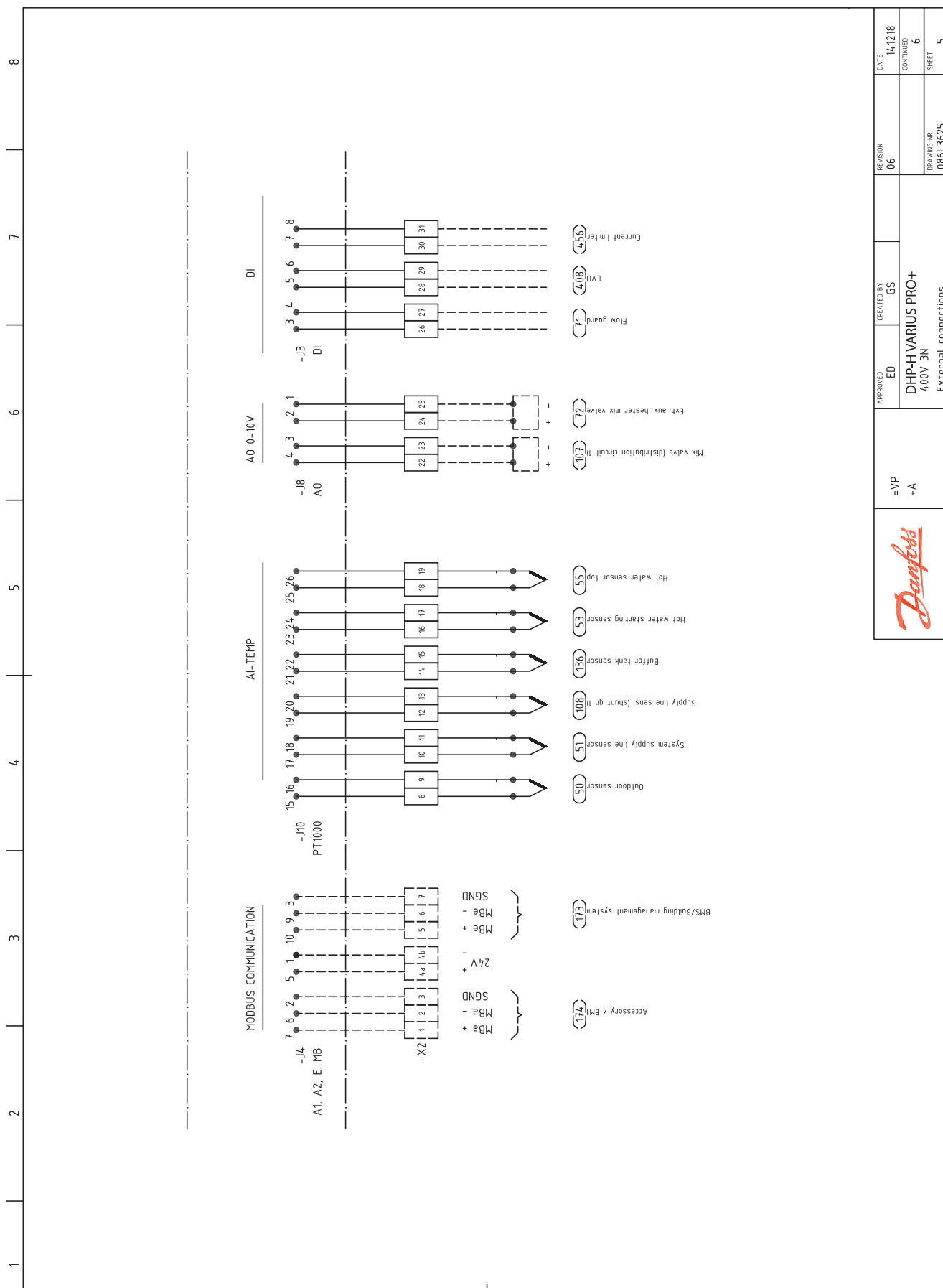


DATE	14.12.18
REVISION	06
CONTINUED	4
SHEET	3
DESIGNED BY	086L3625
APPROVED	ED
CREATED BY	GS
DHP-H VARIUS PRO+	
400V 3N	
I/O connections	
=VP	
+A	



Wiring Diagram

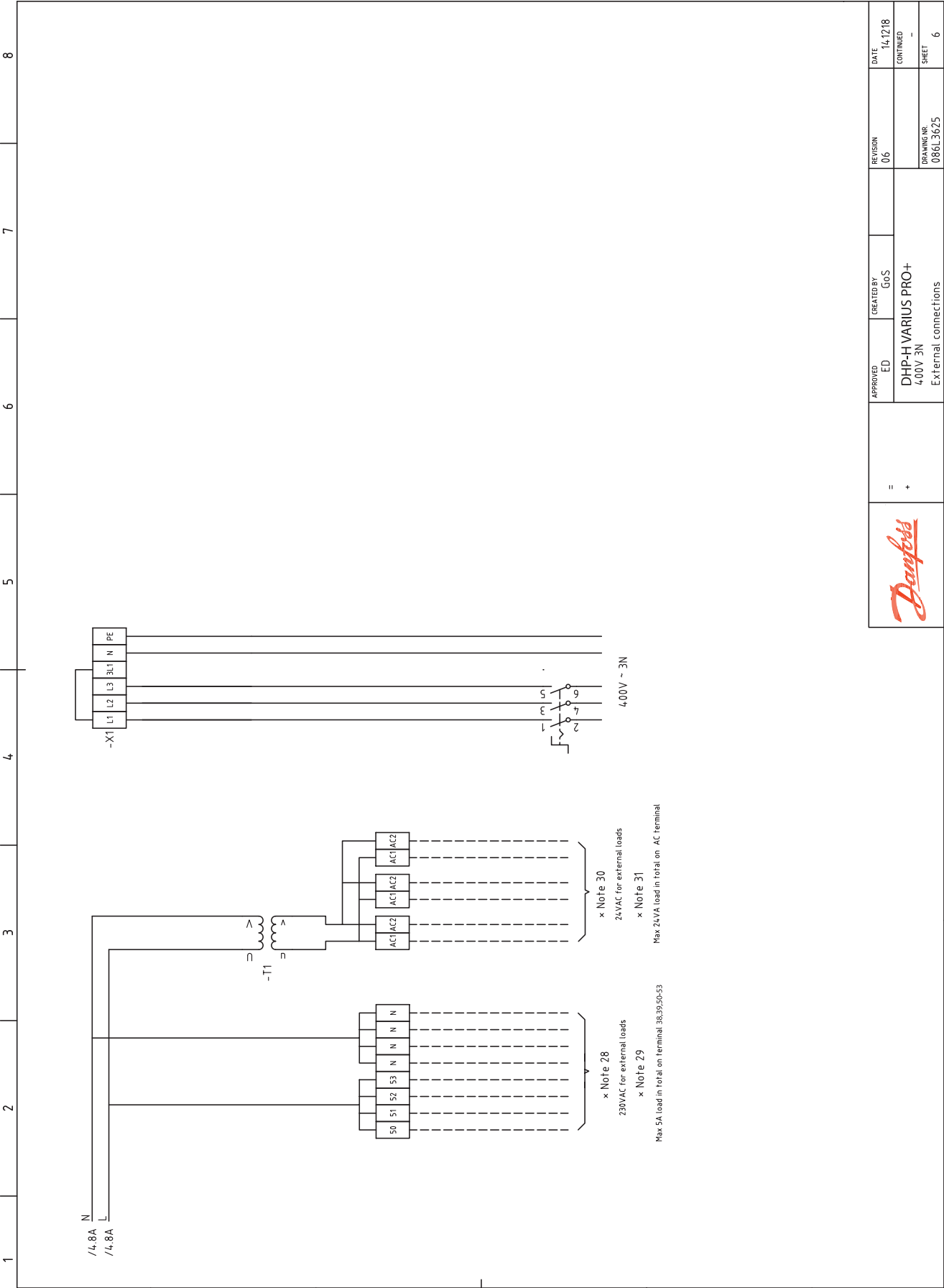
DHP-H Varius Pro+



DATE	14.12.18	REVISION	06	CREATED BY	GS	APPROVED	ED	=VP +A	Danfoss
CONTINUED	6	REVISION	06	CREATED BY	GS	APPROVED	ED		
SHEET	5	REVISION	06	CREATED BY	GS	APPROVED	ED		

Wiring Diagram

DHP-H Varius Pro+



Danfoss Heat Pumps
Box 950
SE 671 29 ARVIKA
Phone +46 570 81300
E-mail: dhpinfo@danfoss.com
Internet: www.heating.danfoss.com

Danfoss can accept no responsibility for possible errors in catalogues, brochures and other printed material. Danfoss reserves the right to alter its products without notice. This also applies to products already on order provided that such alterations can be made without subsequential changes being necessary in specifications already agreed. All trademarks in this material are property of the respective companies. Danfoss Heating Solutions and the Danfoss Heating Solutions logotype are trademarks of Danfoss A/S. All rights reserved.
